

# AC 5 Group

Antonio Citterio, 2017

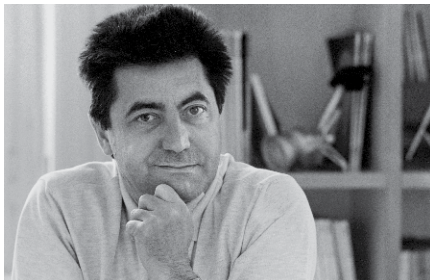


Jointly developed by Antonio Citterio and Vitra, the AC 5 Group is a family of task chairs designed to furnish modern, disparate office landscapes in a consistent aesthetic. Their trim shapes, sophisticated aluminium components and classic Hopsak cover fabric lend these chairs a dignified elegance. At the same time, the various models of the AC 5 Group cover a wide performance spectrum. These high-quality, versatile chairs are especially well suited for specific applications:

from the ergonomically optimised task chair AC 5 Work and the reductive functionality of AC 5 Studio to the conference chair AC 5 Meet.

Contemporary office environments provide diverse settings in which employees can work alone or in groups as needed – whether at ergonomic single workstations or agile team hubs, in closed meeting rooms or informal interaction spaces. With its distinctive angled backrest, the AC 5 design becomes a

unifying visual element in open-plan offices. It can either be used in a uniform version for an understated effect or with the wide range of Hopsak colours to create striking accents or form thematic groups.



## Antonio Citterio

The architect and designer Antonio Citterio, who lives and works in Milan, has collaborated with Vitra since 1988. Together they have produced a series of office chairs and various office systems, as well as products for the Vitra Home Collection. The Citterio Collection is constantly being expanded.

1	AC5 Group	5	Key characteristics	9	Sustainable quality
2-4	AC 5 Work, AC 5 Studio, AC 5 Meet	6	Armrests	10-11	Configurations
		7	FlowMotion mechanism	12-16	Surfaces and colours
		8	Tilt mechanism		

# AC 5 Work

Antonio Citterio, 2017

**vitra.**



The elegant office swivel chair AC 5 Work is equipped with a range of sophisticated functions that not only guarantee healthy seating comfort, but are also discreetly out of sight. This clean look enhances the graceful lines of AC 5 Work, whose distinctive design and uncompromising functionality make it a perfect seating option for well-appointed offices.

The sophisticated structure of the AC 5 Work backrest with three different zones – lumbar zone, sink-in zone and shoulder zone – provides optimum support for the neck and prevents muscle tension. Further ergonomic features of AC 5 Work include the FlowMotion mechanism with synchronised forward tilt and seat depth adjustment, as well as the innovative FreeFloat armrests.

## Materials

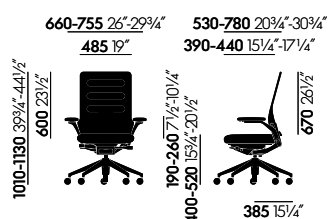
- **Office swivel chair with FreeFloat armrests in accordance with EN 1335, Ergonomic Seal of Approval.**
- **Seat mechanism:** FlowMotion mechanism with synchronised forward tilt (can be disengaged) and with seat depth adjustment. Seat mechanism powder-coated in basic dark.
- **Backrest and seat:** self-supporting backrest structure with horizontally stitched padding.

Backrest mount in polished die-cast aluminium. Optional height-adjustable lumbar cushion. Seat cushion in polyurethane foam. Optionally available with contoured seat. Cover in fabric or leather.

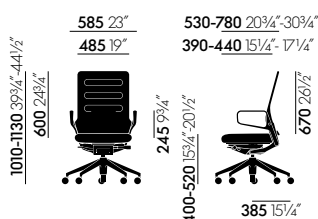
- **Armrests:** choice of fixed, polished die-cast aluminium ring armrests for conference areas (optional leather pads are matched to the leather upholstery; for chairs with fabric covers, the leather pads are in the colour nero); or height-adjustable armrests; or

FreeFloat armrests with polyurethane pads in basic dark.

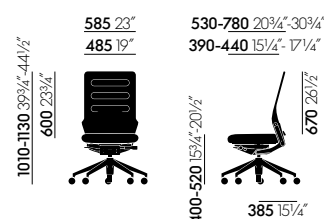
- **Base:** five-star polyamide base in basic dark or polished die-cast aluminium base with double castors (Ø 60 mm) in basic dark.



AC 5 Work with FreeFloat armrests and adjustable lumbar support



AC 5 Work with ring armrests and adjustable lumbar support



AC 5 Work without armrests, with adjustable lumbar support

# AC 5 Studio

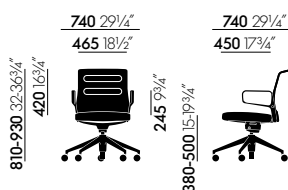
Antonio Citterio, 2017



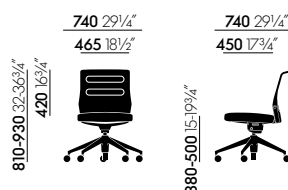
AC 5 Studio is the reductive, informal model of the AC 5 Group of office chairs. Equipped with functions suited for its intended applications – a rocking mechanism and a height adjustment feature – AC 5 Studio provides a comfortable seating solution for touchdown workstations occupied by changing users. Its characteristic angled backrest is not just a unifying visual element shared by all chairs of the AC 5 Group; thanks to its shape, the flexible backrest structure also offers considerable freedom of movement and promotes dynamic sitting.

## Materials

- **Studio chair (swivel, height-adjustable) in accordance with EN 16139.**
- **Seat mechanism:** tilt mechanism, lockable in upright position. Mechanism housing in polished aluminium.
- **Backrest:** self-supporting backrest construction with horizontally stitched padding. Cover in fabric or leather.
- **Seat:** polyurethane foam padding. Cover in fabric or leather.
- **Armrests:** without armrests or with polished die-cast aluminium ring armrests, optional leather pads (pads are matched to the leather upholstery; for chairs with fabric covers, the leather armrest pads are in the colour nero).
- **Base:** five-star base in polished die-cast aluminium or plastic (basic dark) on double castors (Ø 60 mm). Swivel mount, height adjustable.



AC 5 Studio with ring armrests



AC 5 Studio, without armrests

# AC 5 Meet

Antonio Citterio, 2017

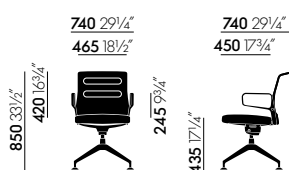
**vitra.**



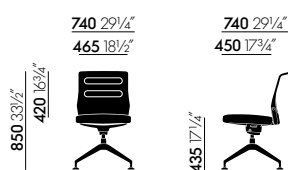
AC 5 Meet is the classic conference chair in the AC 5 Group of office chairs. Thanks to the understated elegance of its design and the use of high-quality materials, AC 5 Meet cuts a fine figure in both traditional and contemporary conference settings. The shape of the chair's backrest enables considerable freedom of movement, and it is combined with a rocking mechanism and shock-absorbing seat suspension to offer superb comfort – even during prolonged periods of sitting.

## Materials

- **Conference chair (swivel)** in accordance with EN 16139.
- **Seat mechanism:** tilt mechanism, lockable in upright position. Mechanism housing in polished aluminium.
- **Backrest:** self-supporting backrest construction with horizontally stitched padding. Cover in fabric or leather.
- **Seat:** polyurethane foam padding. Cover in fabric or leather.
- **Armrests:** without armrests or with polished die-cast aluminium ring armrests, optional leather pads (pads are matched to the leather upholstery; for chairs with fabric covers, the leather armrest pads are in the colour nero).
- **Base:** four-star base in polished die-cast aluminium on glides. Swivel mount with shock-absorbing seat suspension.



AC 5 Meet with ring armrests



AC 5 Meet, without armrests

The construction of the various models in the AC 5 Group is focussed on providing optimal comfort. For this purpose, they are equipped with the latest functional features and designed to offer maximum freedom of movement. Consequently, the chairs in the AC 5 Group promote healthy, dynamic sitting habits.

## BACKREST – A SOPHISTICATED CONSTRUCTION

The backrest of the AC 5 Group combines padded comfort with the visual lightness of a sling construction. The backrest structure is self-supporting. The core element is the flexible plastic frame.

The backrest cover is pulled over the frame and stabilised with quilt-stitched padded chambers.

The padded chambers are not just a design element; they also offer essential support and relieve strain. The backrest cover remains taut even when pressure is applied.



The special quilted backrest construction offers a pleasant upholstered effect.

### 3-zone comfort

The backrest of AC 5 Work offers 3-zone comfort, enabled by the resilient plastic frame, the tensile cover with quilted padding and the integrated lumbar support. Optimal spinal support combines flexibility with a stabilising effect in the zones where it is needed.

## ANGLED BACKREST

The angled shape of the backrest, flexible plastic frame and rear-mounted armrests of AC 5 Studio and AC 5 Meet facilitate various postures and offer considerable freedom of movement.



### Integrated lumbar support

Each AC 5 chair has an integrated lumbar support pad, whose size varies to suit the respective model. It provides a smooth transition to the sink-in zone and effective, comfortable support in the sensitive lumbar region, without bothersome pressure points. Even the AC 5 meeting and visitor chairs are equipped with a lumbar pad, which is optionally height-adjustable for AC 5 Work.

## ARMRESTS

**vitra.**

Antonio Citterio's desire to reduce aesthetics to the bare essentials is demonstrated by the armrests. These appear to 'grow' out of the chair, creating flowing lines and emphasising the timeless elegance of the design.

Connected to the backrest, they allow considerable freedom of movement, such as sideways sitting.

There is a choice of up to three different armrests for the various chairs in the AC 5 Group.

### FreeFloat armrest

(AC 5 Work)

The FreeFloat armrests with innovative adjustment technology can be quickly and easily adapted to a range of positions and seating requirements.

Pressing a button releases the armrest pad, which can slide forwards, backwards or sideways in a 'floating' motion.



### Height-adjustable armrest

(AC 5 Work)

The height-adjustable armrest is the slimline alternative to the FreeFloat armrest, reduced to its essential function.



### Ring armrest

(all AC 5 models)

Ring armrests in die-cast aluminium add an elegant touch to the version for conference settings, particularly when combined with leather pads.





Vitra's patented synchronised FlowMotion mechanism adjusts itself to the weight of the user over the entire range of movement – not just when reclining but also in the forward tilt position.



---

**FlowMotion – a harmonious range of movement**

The adjustment options for the backrest resistance and the forward tilt function allow the user to assume any position between the maximally reclined lounging angle and the forward-tilted sitting posture, exploiting the full range of movement without

physical exertion. The sitter enjoys unlimited freedom of movement but is supported by the chair at all times. This harmonious range of motion accommodates the natural desire to move around and encourages the user to develop dynamic sitting habits.

**Benefits of dynamic sitting:**

- Prevention of spinal injuries by reducing the strain on intervertebral discs.
  - Supplies the muscles with oxygen, preventing tension.
  - Positive effect on blood circulation and stimulation of internal organ functions.
- This improves concentration and helps reduce inner tension and stress.

## TILT MECHANISM

(AC 5 Studio / AC 5 Meet)

**vitra.**

The reclining mechanism allows the sitter to move around and remain comfortable even during lengthy meetings. The tilt mechanism can be locked in the upright position. The seat height of AC 5 Studio is adjustable, and AC 5 Meet is equipped with comfortable shock-absorbing seat suspension.



## SEAT CUSHIONS

(AC 5 Work)

The office swivel chair comes with a choice of two seat cushions made of high-quality moulded polyurethane foam.



### Standard seat

An elegantly designed seat with a comfortably padded flat cushion, which also allows considerable lateral movement.



### Contour seat

A voluminous seat with a curved profile, which offers an immediate sense of exceptional comfort. Its contoured design provides support and stability.





### Vitra Test Centre

All Vitra office chairs are subjected to rigorous testing, based on the parameters of 15 years of use, at the company's own Test Centre. Vitra carries out tests that go far beyond standard requirements, with an

inspection catalogue comprised of the world's toughest tests (simulation of worst-case usage).

Over the years, Vitra has developed additional tests of its own that are not found in any official catalogue of standards.



### Greenguard

The GREENGUARD label for indoor air quality (2001) recognises products that contribute to the creation of healthier indoor environments.



### GS

With the GS seal for tested safety, a state-authorised inspection institute certifies the suitability and safety of the construction and monitors production at regular intervals.



### Ergonomics Approved

The LGA certificate 'Ergonomics Approved' confirms the fulfilment of ergonomic requirements and testing criteria that exceed the minimum legal regulations for office swivel chairs.

## BIFMA

### Bifma

The AC 5 Group fulfils the ANSI/BIFMA standard X5.1-2011, thus meeting the stringent safety requirements for the US market.



**AC 5 Group in light hues:** AC 5 Studio - Plano 03 parchment/cream white, AC 5 Work - Plano 12 light grey/ice blue, AC 5 Work - Premium Leather 72 snow, AC 5 Meet - Leather 73 clay

---



**AC 5 Group in dark hues:** AC 5 Work - Premium Leather 59 jade, AC 5 Work - Twill 05 brown, AC 5 Studio - Hopsak 80 warm grey/moor brown, AC 5 Meet - Plano 69 dark grey

---



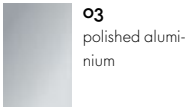
**AC 5 Group in green hues:** AC 5 Studio - Twill 17 green-grey, AC 5 Work - Plano 61 classic green/cognac, AC 5 Work - Hopsak 69 grass green/ivory, AC 5 Meet - Twill 16 avocado

---



**AC 5 Group in red and brown hues:** AC 5 Work - Hopsak 68 pink/poppy red, AC 5 Studio - Leather 97 cognac, AC 5 Meet - Hopsak 88 cognac/ivory, AC 5 Work - Twill 18 canola

---



**Base**  
**AC 5 Meet**



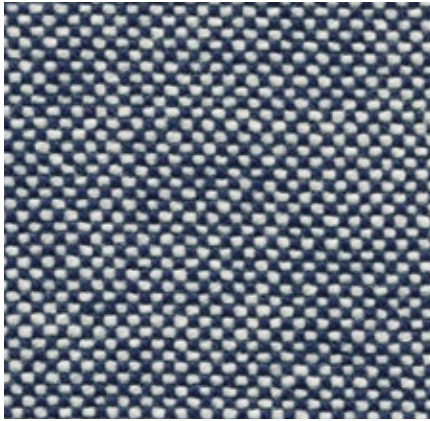
**03**  
polished  
aluminium



**Base**  
**AC 5 Work,**  
**AC 5 Studio**

**01**  
basic dark

# Hopsak Home/Office, F6o



Hopsak is an expressive, flat plain-weave fabric made of polyamide. The duotone colours offer a multitude of design possibilities in high-contrast, brightly hued or subtle combinations of warp and weft threads. Highly durable and robust, Hopsak can be used in private interiors as well as public areas.

Hopsak is available in 35 colours.

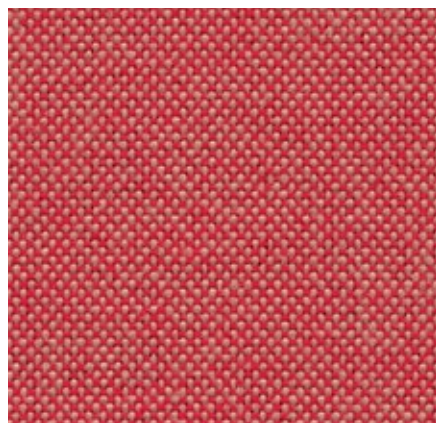
Material	100% polyamide
Weight	550 g/m <sup>2</sup> (16.2 oz/y <sup>2</sup> )
Width	127 cm +/- 2 cm (50")
Abrasion resistance	200,000 Martindale
Fastness to light	Type 6
Pilling	Grade 4-5
Fastness to rubbing	Grade 4-5 dry and wet

<b>71</b> yellow/pastel green	<b>85</b> mint/ivory	<b>73</b> petrol/moor brown	<b>84</b> blue/moor brown	<b>75</b> dark blue/moor brown	<b>23</b> nero/ivory
<b>69</b> grass green/ivory	<b>20</b> green/ivory	<b>81</b> ice blue/ivory	<b>83</b> blue/ivory	<b>05</b> dark grey	<b>80</b> warm grey/moor brown
<b>70</b> grass green/forest	<b>86</b> mint/forest	<b>82</b> ice blue/moor brown	<b>25</b> sea blue/ivory	<b>24</b> dark grey/nero	<b>76</b> marron/moor brown
<b>87</b> ivory/forest	<b>77</b> nero/forest	<b>22</b> sea blue/dark grey	<b>74</b> dark blue/ivory	<b>66</b> nero	<b>62</b> red/moor brown
<b>96</b> red/cognac	<b>67</b> poppy red/ivory				
<b>63</b> red/poppy red	<b>88</b> cognac/ivory	<b>16</b> yellow/ivory			
<b>65</b> coral/poppy red	<b>17</b> nude/ivory	<b>18</b> mustard/ivory			
<b>68</b> pink/poppy red	<b>79</b> warm grey/ivory	<b>19</b> mustard/dark grey			



# Plano Home/Office, F30

**vitra.**



Plano is a robust plain weave with a flat, even texture. The wide palette of duotones with new, delicate washed-out shades includes many relatively neutral hues, a good number of which are coordinated with the Hopsak colour range. Thanks to its durability and longevity, Plano is also an ideal choice for office furnishings.

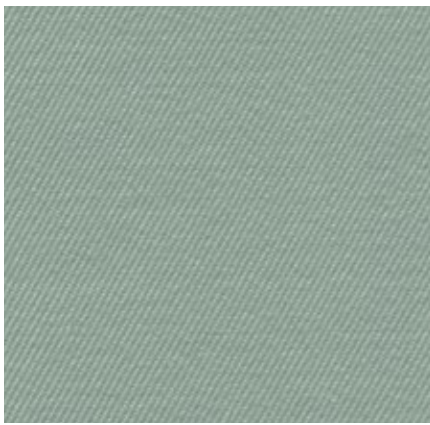
Plano is available in 39 colours.

Material	100% polyester
Weight	265 g/m <sup>2</sup> (7.8 oz/y <sup>2</sup> )
Width	142 cm +/- 2 cm (56")
Abrasion resistance	80,000 Martindale
Fastness to light	Type 6
Pilling	Grade 4-5
Fastness to rubbing	Grade 4-5 dry and wet

 <b>05</b> cream white/ sierra grey	 <b>34</b> grass green/ forest	 <b>12</b> light grey/ice blue	 <b>81</b> blue/coconut	 <b>19</b> sierra grey	 <b>73</b> nero/coconut
 <b>18</b> light grey/sierra grey	 <b>61</b> classic green/ cognac	 <b>17</b> forest/sierra grey	 <b>86</b> dark blue/brown	 <b>74</b> sierra grey/nero	 <b>66</b> nero
 <b>39</b> yellow/pastel green	 <b>41</b> classic green/ forest	 <b>40</b> coconut/forest	 <b>13</b> nero/ice blue	 <b>69</b> dark grey	 <b>54</b> brown
 <b>68</b> avocado	 <b>52</b> mint/forest	 <b>43</b> petrol/nero	 <b>87</b> nero/cream white	 <b>62</b> dark grey/nero	 <b>75</b> marron/nero
 <b>67</b> cognac	 <b>72</b> poppy red	 <b>84</b> poppy red/ champagne			
 <b>11</b> marron/cognac	 <b>07</b> orange	 <b>15</b> pink/sierra grey	 <b>99</b> cognac/parch- ment		
 <b>98</b> dark red/nero	 <b>96</b> red/cognac	 <b>16</b> dark red/ice blue	 <b>20</b> tobacco/cream white		
 <b>97</b> red/coconut	 <b>63</b> red/poppy red	 <b>80</b> coffee	 <b>03</b> parchment/ cream white		

## Twill Home/Office, F6o

**vitra.**



The high percentage of natural fibres gives Twill very pleasant tactile qualities and an inviting appearance. Extremely durable with excellent abrasion resistance, it combines the qualities typically found in home furnishings with the demanding requirements of the project sector.

Twill is available in 18 colours.

Material	30% polyamide, 70% new wool
Weight	325 g/m <sup>2</sup> (9.6 oz/y <sup>2</sup> )
Width	155 cm +/- 2 cm (61")
Abrasion resistance	100,000 Martindale
Fastness to light	Type 6
Pilling	Grade 4-5
Fastness to rubbing	Grade 4-5 dry and wet



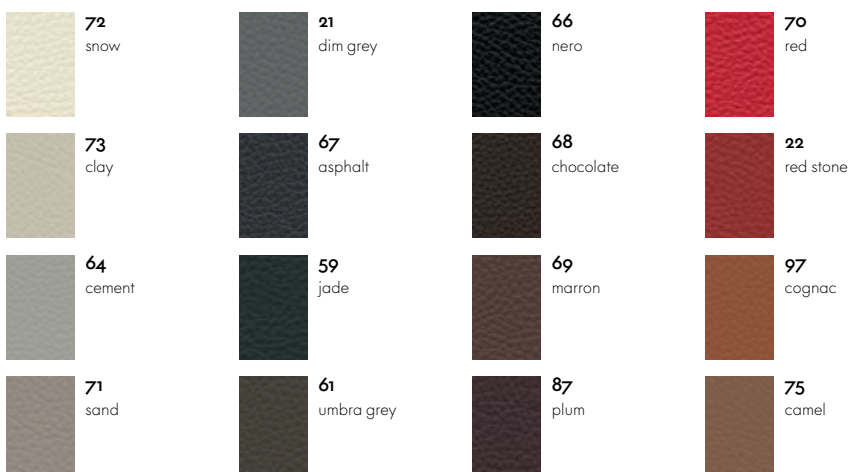
## Leather Home/Office, L2o



The standard grade leather used by Vitra is a robust cowhide leather, dyed-through, pigmented and embossed with an even grain pattern. Since it is hard-wearing and easy to maintain, it can also be used in office environments.

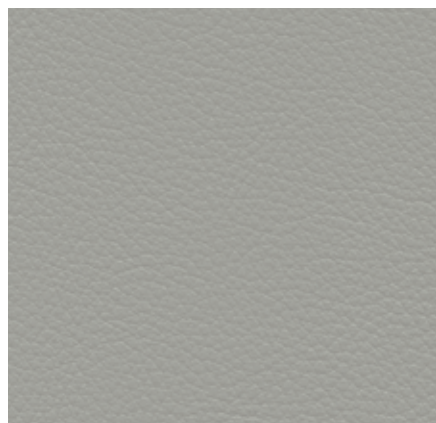
Leather is available in 16 colours.

Material	Robust cowhide with a distinctive, even grain
Fastness to light	Type 6
Thickness	1.1-1.3 mm
Fastness to rubbing	Grade 4 dry and wet



# Leather Premium Home/Office, L40

**vitra.**



Leather Premium is a relatively smooth cowhide leather with a flat grain and fine top sheen. It is dyed-through and lightly pigmented. The semi-aniline leather is soft to the touch and available in 22 colours.

Material

Semi-aniline nappa leather with a very soft and supple feel

Fastness to light

Type 5

Thickness

1.1–1.3 mm

Fastness to rubbing

Grade 4 dry and wet

only for AC 5 Work



## CARE INSTRUCTIONS

Vacuuming is sufficient for the removal of dust and lint from upholstery fabrics. For the treatment of spots on cover fabrics and plastic surfaces, we recommend the use of a soft, damp cloth and a mild, neutral cleaning agent. Polished aluminium can be wiped with a normal glass cleaner and dried with a clean cloth.

For the care of leather covers, please consult the instructions in the leather brochure included with the product. Further maintenance information can be provided by your Vitra sales representative; the removal of difficult stains should always be entrusted to an expert cleaning company.

We recommend the use of environmentally friendly cleaning agents as well as regular care of your furnishings and the prompt treatment of spots and stains. Before using a detergent or other cleaning agent, it is advisable to test it on a concealed area.

